

ASIV

Automated Switch Inspection Vehicle



PROTRAN
TECHNOLOGY

A Harsco Rail Company



DESCRIPTION

Protran Technology's Automated Switch Inspection Vehicle (ASIV) system aids in motoring and evaluating the status of both turnouts and plain-line track. The inspection system identifies derailment hazards, accurately measures key dimensions, verifies FRA requirements, evaluates maintenance conditions, and monitors degradation over time. When data is processed in the ASIV's SwitchWear software suite, comprehensive turnout inspections can be created which detail many critical measurements and condition assessments needed of turnout components.



High-density cross-sectional rail profiles in complex track areas



Gap between switch and stock rails



Check wheel / rail contact

Automated Switch Inspection Vehicle

TEST AND ANALYSIS CAPABILITIES

Special design high density rail profile measurement system

- 1 in (22 mm) sampling interval at 8 mph (13 km/h)
- Wide field of view

SwitchWear software analyses

- Key measurements of switch point, stock rail, and frog
- Relative height, gauge face angle, point gap, flange depth, guard check / face gauge

Safety conditions

- Damage to switch, frog, or wing rails
- Obstructions

General maintenance conditions

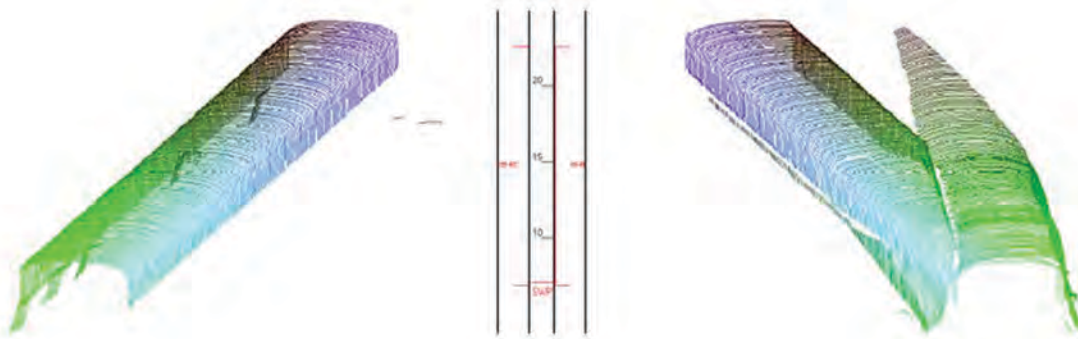
- Wear / plastic deformation / track gauge
- Maintenance priority index

Comprehensive reporting

- Detailed report for each turnout
- Shift report for each day

RAIL PROFILE MONITORING CAPABILITIES

- Find derailment hazards
- Measure key dimensions accurately
- Check FRA requirements
- Check maintenance conditions
- View complex rail areas in cross section
- Monitor degradation over time



Three dimensional composite view of switch and stock rails